

# JAPAN REGGAE NIGHT

FOR ONE NIGHT ONLY, CUTTING EDGE RECORDING ARTISTS MEGA

# MEGARYU



FOR ONE NIGHT ONLY, NEW YORKERS HAD A CHANCE TO GET A TASTE RECORDING ARTISTS MEGARYU AND PANG. J!-ENT FEATURES MEGARYU AND PANG

# T LIVE IN NEW YORK

RYU AND PANG GIVES US A TASTE OF REGGAE — JAPANESE STYLE!



OF JAPANESE REGGAE MUSIC COURTESY OF JAPANESE REGGAE LEGEND **NAHKI** AND CUTTING EDGE AND A REPORT ON "JAPANESE REGGAE NIGHT LIVE IN NEW YORK" AT CRASH MANSION ON NOV. 21.

BY DENNIS A. AMITH

ALBUM PHOTOGRAPHY COURTESY OF AVEX ENTERTAINMENT, LTD.  
CONCERT PHOTOGRAPHY BY NIREI

**R**eggae music has permeated into Japanese culture and among the forefront of Japanese reggae music are Cutting Edge recording artists, MEGARYU.

MEGARYU is the name of the duo combining the names of members MEGA HORN and RYU REX.

The duo formed back in 2004 with RYU REX's stunning dance hall reggae vocals and MEGA HORN's incredible megaton-class Dee Jay which has brought the duo to #1 status on the Japanese Oricon charts with their second album "Garyu Senpu".

MEGA HORN is originally from Gifu and became interested in exploring club music in conjunction with reggae music back in 1995 with influence by Jamaican music artist Buju Banton.

MEGA HORN influenced by reggae music started up his own group known as the REGGAE CREW and became an MC and then a Dee Jay in 1997.

RYU REX had his first taste of reggae music back in high school in 1993 in which he attended a club and was fascinated by the bass in reggae music. The vocalist was hooked and in 1999, visiting California, attended the clubs and to local studios to polish his vocals and performance. Upon returning back to Japan is when he hooked up with MEGA HORN.

In 2000, the duo hooked up with music diva, hitomi and formed a trio known as Magnitude. The group started to do promotional mix tapes to get themselves known.

In 2001, hitomi left the group and it was back to being a duo in which they hooked up with the YA-LOW label in which the duo then known as MEGA HORN & RYU REX had a song in a reggae compilation titled "WAVE YOUR HANDS".

In 2002, the duo released their second song "Ambitious" for the



\* MEGARYU PERFORMING AT "JAPANESE REGGAE NIGHT LIVE IN NEW YORK".

Photography by Nirei

second series of the compilation.

And in that same year, had their big break with their first indies album produced by legendary Japanese reggae artist NAHKI.

In 2003, the duo participated in a new album compilation titled "BUSH HUNTER" which is on the Indie label of Warner Music of popular dance hall reggae artist RYO THE SKYWALKER.

That same year, the duo releases their second mini album produced by NAHKI titled Eternal but this time, the duo is now known as MEGARYU.

In 2004, the duo then exploded onto the music scene. First with a performance at the Japan Reggae Festa in Okinawa and then hooking up with music diva Koda Kumi for her song "HEAT" which was the coupling song for her 12th CD single "CHASE".

The duo then released their first mini album "JUST NOW" on AVEX's Cutting Edge label in which their song "ETERNAL LOVE" received airplay on the radio and caught the attention of many listeners.

The duo participated in a music competition and was awarded the 2004 FM Aichi

prize (which was won previously by artists such as BoA [2001], Nobody Know [2003]) and took part in performances celebrating the 25th anniversary for Tower Records.

In 2005, the duo achieved critical mass with a second mini-album "Motto Toyoku" and their first full album "Jyosyou Kiryu". And performed at a multitude of events in Japan throughout the year.

And in June 2006, the duo successfully reached the #1 position on the Oricon Album Charts with their second full album "Garyu Senpu".

And the icing on the cake includes their live performances with artists PANG and lecca with all tickets sold out and to top it off, a performance in New York with NAHKI and PANG.

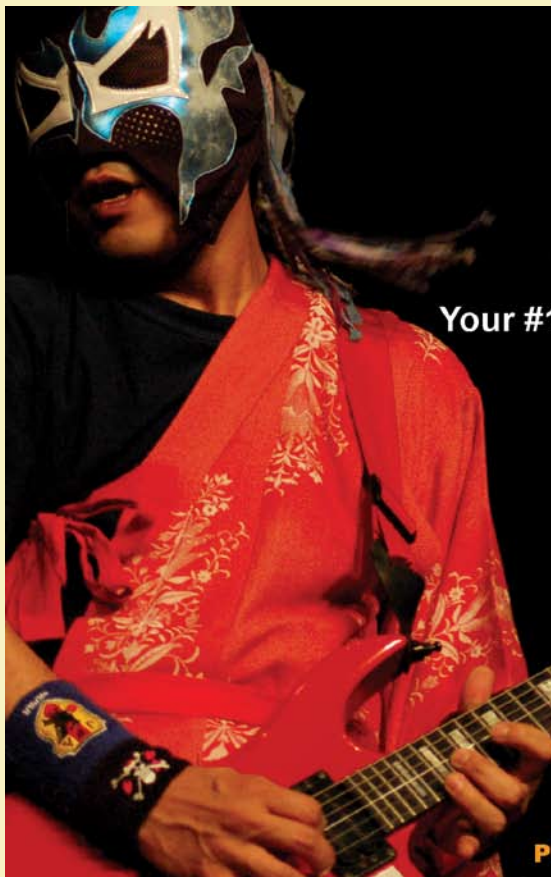
And just to think how far the duo has come since 2000. To be in the forefront of exposing Japanese reggae music to the mainstream.

MEGARYU is currently noted as the most remarkable duo going beyond the reggae music scene in Japan.

# MEGARYU DISCOGRAPHY



**Top Row:** MEGARYU's full length albums "Jyoushou Kiryu" (2005) and "Garyu Senpu" (2006). **BOTTOM ROW:** The duo's first major label debut was on Koda Kumi's CD single "Chase" with the coupling song "HEAT" in July 2004 and two months later with their first major label mini album "JUST NOW" and a second mini album released in February 2005 titled "Motto Towoku" and in March 2006 released their third mini album "Day by Day".



**japanFiles.com**  
 Fresh music from Japan

Your #1 Source for the newest and best **JAPANESE** rock!

Over 100 bands!  
 Rock / Hip Hop / Punk / Techno  
 All downloads are only 99 cents!

POPLAR at Fanime MusicFest - San Jose, CA

Guitar Vader  
 Limited Express  
 TsuShiMaMiRe  
 Ketchup Mania  
 Kings  
 Rocket K  
 Myria  
 Ampere  
 Happy Chopper  
 Gyogin Kendo  
 mothercoat  
 Swinging Popsicle  
 Luminous Orange  
 Poplar  
 Mix Market  
 Goofy Style  
 miami  
 Up Hold  
 Pop Chocolat  
 Karma  
 Auroranote  
 Higuchi Makiko  
 mario garden  
 City Booka  
 Kotori Kick  
 Red Sugar Kid

**R**eggae music in Japan has been permeating the music culture through the likes of NAHKI, RYO the SKYWALKER and MEGARYU.

But unlike what we have seen in the past, with pop singers singing to a reggae ballad, what we are starting to see more and more in Japan are female artists who truly have embraced the Jamaican culture and rasta lifestyle as embodied in their reggae music.

One of the women known for her reggae music is Cutting Edge recording artist, PANG.

PANG is a brilliant reggae singer with unique & distinctive lyrics and absolutely enchanting & spirited voice.

From Kobe, PANG is an artist that is musically talented. Learning piano at a young age, as a teen, enjoyed singing vocals and also learned to play the bass.

Music was in her blood and it led to live performing acts in 2000 and eventually caught the eye of Japanese reggae pioneer NAHKI in 2002.

From this point in her life, she was performing at larger music events including the 2002 ZIP FM Reggae Feast with artists such as PUSHIM and Fireball which won her over new fans for her unique lyrics and sound.

In 2003, PANG released her first indie mini-album but her first major label debut with AVEEX's Cutting Edge label was her second mini-album "Hare" which was released in November 2003 which featured the song "Sutekina Yozora".

In March 2004, PANG released her third mini album "YURARI" and in June, released her fourth with "Aha!" which included a collaboration with singer Oda Kazumasa (from the popular 70s and 80s folk band Off Course) and two songs with artist, lecca.

In 2005, it was a breakthrough year for PANG as she released her fifth mini-album in February "stage by stage" working with



\* PANG JAMMIN' AT "JAPANESE REGGAE NIGHT LIVE IN NEW YORK".

Photography by Nirei

NAHKI, lecca and MEGARYU.

In April, she released an Okinawa limited edition single with "tropical island" and then in June with her long-awaited first full self-titled album "PANG".

And to continue the amazing year with the August release of her CD single "Kaze no Rakuen" which was the Japanese theme song for the animated Dreamworks movie "MADAGASCAR" and also the first Japanese artist to be appointed to sing for a Dreamworks movie.

In February 2006, PANG released her sixth mini album titled "Rela-x" and remarkable for

including a reggae spin on the popular classic "Hana".

And in June, PANG released her second full album which features 14 songs that showcase the diverse talent and her beautiful voice from E~O~!! to a slow relaxing song such as "Coco Natsu Beach".

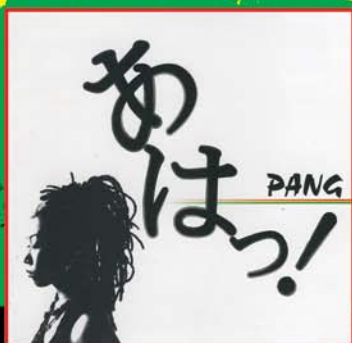
And this past October, PANG joined NAHKI and MEGARYU for a concert at CRASH MANSION in New York.

PANG is certainly one of the most potential artists who will make significant marks in Japan's reggae music scene.

# PANG DISCOGRAPHY



**Top Row:** PANG's full length albums "PANG" and "PANG II". **BOTTOM ROW:** PANG's mini albums which include her first indie mini album debut "Pezora" (2003), "Hare" (2003) was her first major label debut with Cutting Edge Records and her second mini album, followed by her third mini-album "Yurari" (2004) and fourth "Aha!" (2004), her fifth mini-album "Stage by Stage" (2005) and "her sixth Rela-x" (2006). She released two CD singles (not pictured). A limited edition CD single "Tropical Island" (2005) and "Kaze no Rakuen" (theme song for the Dreamworks animated film "MADAGASCAR" (2005).



[www.giantrobot.com](http://www.giantrobot.com)

KUBRICKS UGLY DOLLS YOSHITOMO NARA TAKASHI MURAKAMI 2KSHIRTS  
 RYAN MCGINNESS GEOFF MCFETRIDGE GAMAGO OBEY KINSEY STACKS BRAVELAND  
 INDIE COMICS DESIGN BOOKS STATIONERY PLUSHES HANDMADE GOODS ORIGINAL ART

gr 2015 sawtelle blvd los angeles 310.478.1619 giantrobot.com  
 gr2 gallery 2062 sawtelle blvd los angeles 310.445.9276 gr2.net  
 grsf 622 shrader st san francisco 415.876.4773 gr-sf.com

giant robot **GR2** giant robot sf

ape man by brian ralph

TUES, NOVEMBER 21st @ CRASH MANSION

# JAPANESE REGGAE

# CRASH MANSION

199 Bowery  
(at Spring)  
212.982.0740  
Doors 7pm

#1 on National Chart in Japan in 2006

# MEGARYU

Backed by: "JERRY HARRIS"  
MC by: JEFF SERGI

\* PROMOTIONAL PIECE FOR THE "JAPANESE REGGAE NIGHT LIVE IN NEW YORK"

# LIVE in NEW YORK

Tickets at  
[www.CrashMansion.com](http://www.CrashMansion.com)

# CRASH MANSION



Brightest Hope  
Reggae Diva from Japan

# PANG

& RIDDIM FORCE BAND"  
E (WFMU 91.1MHz)



Legendary International  
Reggae Artist from Japan

# NAHKI

YORK" EVENT WHICH TOOK PLACE AT CRASH MANSION ON NOVEMBER 21, 2006

# JAPANESE REGGAE LIVE IN NEW YORK



\* MEGARYU PERFORMING AT JAPAN REGGAE NIGHT LIVE IN NY. Photography by Nirei

Feel that vibe as Japanese reggae invades New York.

"Japanese Reggae Night Live in New York" which brought in several hundred people to New York's Crash Mansion on Nov. 21st gave the audience a taste of Japanese reggae.

Hosted by Jeff Serge from WFMU 91.1, the night was definitely special as long time Japanese reggae music fans in America had their first opportunity to watch three icons known for bringing Japanese reggae music to the masses together for one night.

For one night only Japanese reggae stars such as the legendary Japanese reggae icon NAHKI presented chart topping duo MEGARYU and Brightest Hope reggae diva PANG who took to the stage with Jerry Harris & Riddim Force Band.

NAHKI is a legend in Japan as he is notable for his reggae works and discovering and producing music for upcoming Japanese reggae artists. Two of them who performed with him that night.

Cutting Edge recording artists

MEGARYU features duo MEGA HORN and REX RYU.

The two known for their dance hall reggae, MEGA HORN and REX RYU have dominated the charts in Japan and scored a #1 position on the Japanese Oricon Album Charts with their second album "GARYU SENPU".

Following MEGARYU's performance was Cutting Edge recording artist PANG.

PANG was the first Japanese artist to work with Dreamworks ever when she sung the Japanese theme song to the animated film "MADAGASCAR".

With both MEGARYU and PANG performing three songs, the night featured the legend of Japanese reggae, NAHKI who brought an awesome energy at the venue with his music.

With such a positive vibe after NAHKI's performance, all four performers joined together for the final song.

"Japanese Reggae Night Live in New York" was a success in introducing reggae fans to Japanese reggae and most of all bringing Japan's top reggae talent to the U.S. ■

## JAPAN REGGAE NIGHT LIVE IN NY SET LIST

- (MC - Jeff Serge from WFMU 91.1)
- 1. Instrumental (Jerry Harris & Riddim Force Band)
- 2. (Jerry Harris & Riddim Force Band)
- 3. (Jerry Harris & Riddim Force Band) (MC - Jeff Serge from WFMU 91.1)
- 4. Bad Nahki (Nahki)
- 5. A Ya Wi Deh (Nahki)
- 6. DJ Medley on Punnany (Nahki) (MC - Jeff Serge from WFMU 91.1)
- 7. Yume (Megaryu)
- 8. Mack-Kac-Ka (Megaryu)
- 9. Sunshine (Megaryu) (MC - Jeff Serge from WFMU 91.1)
- 10. Yozola (Pang)
- 11. Smile (Pang)
- 12. Twist & Shout (Pang) (MC - Jeff Serge from WFMU 91.1)
- 13. Ragga Salsa (Nahki)
- 14. My Wuk (Nahki)
- 15. Time (Nahki)
- 16. Love & Unity (Nahki & Jerry Harris)
- 17. I'll Do It (Nahki) (MC - Jeff Serge from WFMU 91.1)
- 18. Combination (Nahki & Jerry Harris w/ Megaryu & Pang) (MC - Jeff Serge from WFMU 91.1)



MEGARYU  
2nd ALBUM  
「我流旋風」  
CTCR-14487  
NOW ON SALE



<http://www.avexnet.or.jp/megaryu/>

RYU REX's stunning dancehall reggae vocals and MEGA HORN's incredible megaton-class DJ together make Japan's most exquisite reggae duo - MEGARYU. Since their major debut in 2004, MEGARYU has released 2 albums. With their recent work [我流旋風(2006)], which became the HIT #1 album on the domestic chart, MEGARYU is currently noted as the most remarkable duo going beyond the reggae music scene in Japan.

MEGARYU

PANG

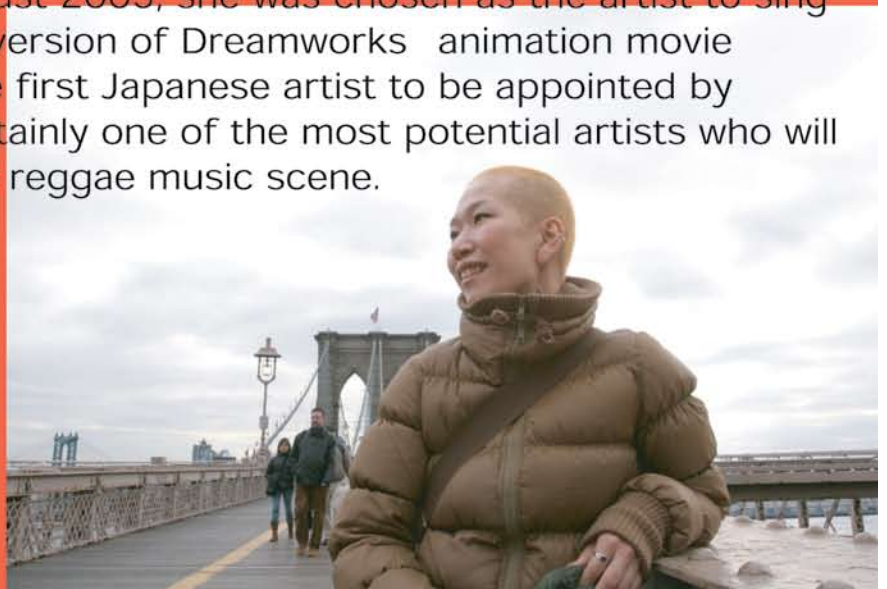
PANG's talent was discovered by the pioneer of reggae music in Japan, NAHKI. Since the major debut in 2003, PANG has released 2 albums.

PANG is a brilliant reggae singer with unique & distinctive lyrics and absolutely enchanting & spirited voice. August 2005, she was chosen as the artist to sing the theme track for the Japanese version of Dreamworks' animation movie - [Madagascar] - and became the first Japanese artist to be appointed by Dreamworks' movie. PANG is certainly one of the most potential artists who will make significant marks in Japan's reggae music scene.

PANG  
2nd ALBUM  
「PANG II」  
CTCR-14431  
NOW ON SALE



<http://www.pang.jp/>



# JAPANESE REGGAE LIVE IN NEW YORK



\* MEGARYU PERFORMING AT "JAPAN REGGAE NIGHT LIVE IN NEW YORK" AT CRASH MANSION.  
Photography by Nirei

# JAPANESE REGGAE LIVE IN NEW YORK



\* PANG PERFORMING AT "JAPAN REGGAE NIGHT LIVE IN NEW YORK" AT CRASH MANSION.  
Photography by Nirei